



6 Nomansland Art Exhibition
25th -28th August 10-5

Local artists offering a wide range of art work in all media and subjects, including photography. Plus the best of the children's artwork from the Nomansland spring art competition.

Methodist Chapel, Nomansland
01794 322131

From J2, M27 Ower, take A36 Salisbury road.

After 'Shoe Inn', Plaitford, take next left signposted Nomansland. The chapel is opposite the Nomansland village green near 'Lamb Inn'.

Access may be difficult for wheelchairs

7 'Take Ten Artists'

Kate Charman / Jill Bentley / Margot Adams / Maureen Davies / Jackie Langfeld / Martin Slater / Gillian Smith / Helen Waygood / Deirdre Whitworth / Joanna Williams

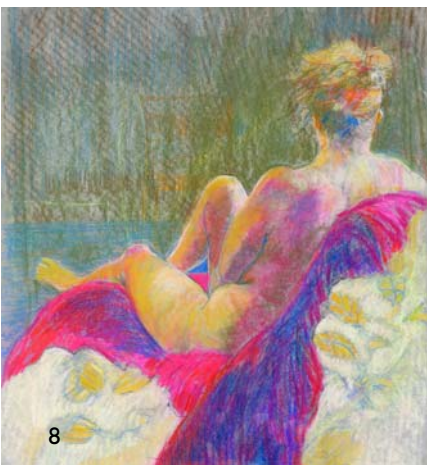
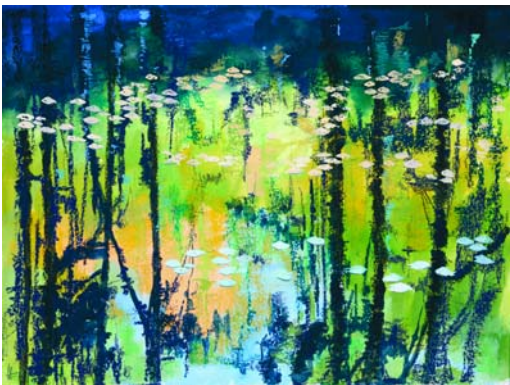
7A see page 72

SAT SUN MON TUE WED THUR FRI SAT SUN MON CLOSED **11-5** Various media, also cards, wide range of prices

Godshill Village Hall, (on B3078) near Fordingbridge SP6 2LP

www.take10artists.co.uk enquiries@take10artists.co.uk 01425 657115 (Kate Charman)

Godshill Village Hall is 2 miles east of Fordingbridge on the B3078 (in the New Forest). The hall is next to 'The Fighting Cocks' pub. Parking is close and free. Free tea and coffee. **Suitable for disabled visitors**



8 Simone Troy / Sarah Goodwin / John C. Wilkinson oil / acrylic
open each day 11-6

A wide section of impressionist landscapes, seascapes, forest scenes, animals, and flower painting.

The Old Posthouse, Stuckton Road, Stuckton, Fordingbridge SP6 2HE

01425 657477

1 mile from Fordingbridge. Past 'Three Lions' restaurant, in Stuckton Road. Parking. Refreshments.

Access for disabled visitors



9 Ruth Cross
hand-knits

CLOSED WED THUR FRI SAT SUN MON CLOSED THUR SUN **11-6**

Visit the design studio of this luxury knit label that handmakes garments, accessories and homeware for an international market.

12 Ashford Marine Works, Ashford Road, Fordingbridge SP6 1DA

01425 652880 ruth@ruthcross.com

From Fordingbridge head towards Sande Heath. At 'Augustus John' pub turn left. Ashford Works is 2nd entrance on the left. Please park on road and walk to studio (30m).

Disabled access possible but not easy.



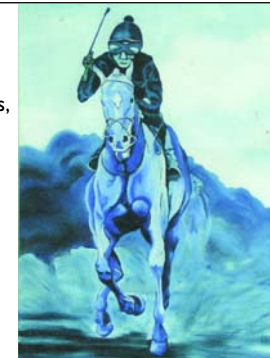
10 Angela Hodgson oil
open each day 11-6



I am inspired mainly by nature and colour, painting flower forms, landscapes, seascapes, abstracts, portraits of people and animals. Commissions of cats, dogs, horses and people undertaken.

'The Boy' Drove End Farm, Hillbury Road, Alderholt, Fordingbridge SP6 3DD

From Fordingbridge, take the 3078 to Alderholt. On entering the village, turn left into Hillbury Road. Continue for about 1 mile to Drove End Farm on left (just before junction of Hillbury Road and Ringwood Road). Follow the pink arrows to 'The Boy'. **Regret no disabled access**



11 Artlook watercolour / acrylic / oil / pencil / pastel
23rd to 25th August 10-5

A group of twelve artists. Their work is diverse in subject matter, styles and media. Framed paintings, drawings and a range of greetings cards. Teas, coffees and cakes sold.

Damerham Village Hall, Damerham, Fordingbridge SP6 3HE

01725 518275 email: webmaster@damerham.org www.artlook.org

Damerham Village Hall is situated in the centre of Damerham opposite 'The Compasses Inn' on the main road from Fordingbridge to Cranborne. **Wheelchair accessible**

