



178 Anni Grove ceramics / painting

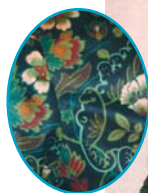
open each day, 10-4

Handmade and hand painted ceramic birds, cats, dogs and horses, suitable as gifts or collectables. Also animal portraits from photographs.

The Priors Farm, Mattingley, Hook RG27 8JU
01256 766493 annigrove@hotmail.com
www.annigrove.co.uk

From M3 exit J5, take B3349 towards Reading. After about 2 miles, note 'Bluebecker' pub on right. Continue slowly, park on green before brown sign. Walk right towards Diple. Take first gateway in hedge on right – 20yds. Studio is down slope on left inside gate of farm.

STOP PRESS



7A Ellen Fellows fabric / design / recycling

CLO SUN CLO TUE CLO THUR FRI CLO SUN MON TUES CLO THUR FRI SUN 11-4

"Bellesque" is a unique collection of handmade garments and bags, some from new fabrics and some vintage or recycled fabrics. 

The Tree House, Godshill Pottery, Godshill, Fordingbridge SP6 2LN
01425 657497

1 mile from 'Fighting Cocks' pub out of Godshill on B3078. Up onto New Forest. On the left, 50yards after Godshill Pottery.
Regret unsuitable for disabled visitors

76A Tricia Parsons ceramics

SAT SUN CLO CLO SAT SUN MON CLO CLO SAT SUN 11-5

My hand thrown porcelain ceramics reflect the contrast between this soft pliable material and its hard high fired result. Work is manipulated with precious metals added as inclusions and lustres. A select group of glass objects also available.

The Firs, Hookpit Farm Lane, Kingsworthy, Winchester SO23 7NA 01962 886860
triciaparsons@hotmail.com www.triciaparsons.co.uk

From 'Cart & Horse' pub, turn right into Church lane, right into Springvale road, left by Tesco Express. Continue along Hookpit Farm Lane, the Firs is on the left. **Suitable for disabled visitors**



163A Kathy Kiely acrylic on paper / gesso panels / canvas

open 16th & 17th August, 10-5

The paintings are a response to the surrounding countryside. Colour is very evocative, promoting and changing moods – you can sink into colour, become part of it. Surface is another important feature, but most of all the work is to be enjoyed.

2 Hockley Cottages, Cheriton SO24 0NU 01962 771623
kathy@kathykiely.co.uk www.kathykiely.co.uk

In Cheriton, head towards Winchester, pass village green on left. Follow road around, with 'Flower Potts' pub on left. Continue to crossroads, turn right onto A272 for Winchester for ½ mile to last set of cottages. **Unsuitable for disabled visitors**

