



### 173 The Bentley Group

Wendy Bennett / Veronica Blake / Ron Clements / Hilary Dancer / Dennis Davis / Peter Forey / Brian Fox / Helen Murgatroyd / Naomi White / Tony Yates

Fri 22nd August 12-5, Sat 23rd & Sun 24th 10-5

We are a group of 10 artists covering a range of styles from traditional watercolour to contemporary abstract. The relaxed village setting makes a lovely atmosphere in which to view the exhibition and see the artists at work. Cards and prints also for sale.

Hugh Barton Room, Bentley Memorial Hall, Bentley GU10 5LW

Signposts to Bentley village off the A31 (Bentley By Pass) between Alton and Farnham. The hall is at the crossroads in the centre of the village. Refreshments. Easy parking. **Regret no disabled access (first floor)**

Headley  
Charter Alley  
Oakley  
Basingstoke  
Mattingley

Headley 174



### 174 Frayed Edges: Sue Crook LSDC / Gill Banks LSDC Ticia Lever LSDC / Elizabeth Sayers LSDC

23rd to 29th August, 11-5

Four textile artists working in fabric, paper etc. using batik, dyeing, discharging, needlefelting, machine and hand stitching. On sale are wallhangings, pictures, photos, cards, bags, jewellery etc.

Refreshments in aid of St Michael's Hospice, Basingstoke

2 Tan Cottages, Ashford Hill Road, Headley RG19 8AP

01635 268922 (phone/fax) website: [www.frayededges.co.uk](http://www.frayededges.co.uk)

From Kingsclere towards Newbury on A339 turn right into Ashford Hill Road (coming from Newbury to Kingsclere turn left). Almost a mile further on, on a nasty bend, we are second of 2 cottages on the right after Wheatlands, just before a steep hill. **Regret no disabled access**

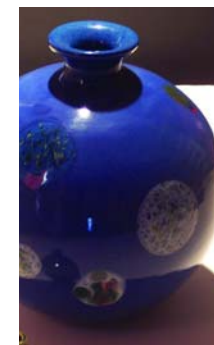


### 175 Suzie & Mike Hall ceramics/acrylic 16th to 23rd August, 12-7

SUZIE's work covers all ceramic disciplines. Work covers the use of colour and hand painted design on both built and thrown shapes. MIKE is a figurative painter, working on French and Italian interiors and garden spaces.

Bassetts, White Hart Lane, Charter Alley RG26 5QA  
tel/fax: 01256 850167 bscshep@aol.com

From M3 exit J6, take A339 ringroad to Newbury. Take A340 to Tadley. Pass hospital, down hill into small village. Turn left, signed Monk Sherborne & Charter Alley. In Charter Alley, take first right, 2nd left. Bassetts is next to 'White Hart Inn'. **Regret unsuitable for disabled visitors**



### 176 Linda Poynter / Nick Simpkins watercolour / acrylic / pastels or by appointment

SAT SUN CLOSED 20 CLO 22 23 24 25 CLO 27 CLO 29 30 31 11-5

Sister and brother working in various styles and subjects (except abstract). They are self-taught, with several year's experience, but this is their first exhibition.

14 Fox Lane, Oakley, Basingstoke RG23 7BB  
01256 781690 linda\_poynter@yahoo.co.uk

B3400 about midway between Basingstoke and Overton, turn beside 'Fox' pub towards Oakley, into Fox Lane. 250yds down on right. Park off road in front garden, go to rear conservatory. Refreshments. **Gravel drive, but suitable for disabled visitors**



### 177 Pauline Pepper / Carol Ellis / Siobhan Jones SAT CLOSED TUE WED THUR FRI SAT CLOSED 11-5

Viables Craft Centre,  
The Harrow Way, Basingstoke RG22 4BJ

From J6 on the M3 take first exit on first roundabout onto A30 west, next roundabout 1st exit left onto Hackwood Road, next roundabout 3rd exit, right onto Grove Rd. Next roundabout 2nd exit. Straight on to The Harrow Way, the Centre is on the left. **Good access to most of Centre**



Siobhan Jones glass  
Unit 19

01256 472727

siobhan@siobhanjones.com

www.siobhanjones.com

"A unique collection of bespoke kiln formed glass wall panels, lighting and pendants."

Carol Ellis encaustic wax

Unit 25a

07866600817

cazy@artofwax

www.artofwax.co.uk

"Seeing is believing this technique." Demonstrations

Visitors will be offered a warm welcome and a coffee. Viables has a dozen more studios to visit, good parking, a field for picnics and play, toilets and an Indian restaurant.



Pauline Pepper textiles

Unit 18 01256 811371

www.paulinepepper.co.uk

"Hand rolled felt pictures and accessories"

