

M.W. X 3

### 162 Alresford Monday Painting Group

**open 16th-24th August:**  
**16th 2-5, 17th-23rd 10-5, 24th 10-3**

We are a group of 18 artists who meet once a week to encourage each other to produce paintings and drawings in a variety of media. Our styles are quite varied, many inspired by the local Hampshire countryside. Come for a browse, cup of tea or coffee.

**Old Alresford Village Hall, Old Alresford SO24 9DH**  
**contact: David Sutcliffe dauidsuckcliff@madasafish.com**

From New Alresford take the B3046 to The Candovers, about 1 mile from New Alresford on the left. **Facilities for disabled visitors (one threshold)**



### 163 Melody Hawtin BA HONS

oil / prints on canvas & paper

SAT 16 CLOSED THUR 21 FRI 22 SAT 23 CLOSED THUR 28 FRI 29 SAT 30 CLO **10-5**

Dramatic oil paintings and prints on cotton paper and canvas. I am a member of the Fine Art Trade Guild.

**Melody Art, West Street (in drive next to Moda Rosa), Alresford SO24 9AB**

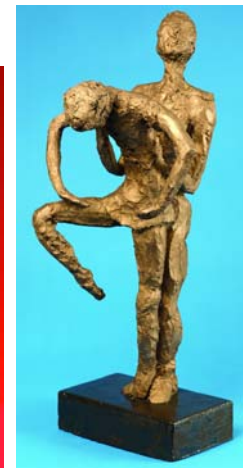
01962 733123

melody@melodyart.co.uk www.melodyart.co.uk

Half way along main High Street (B3047).

**Regret unsuitable for wheelchair users**

**163A** see page 72



M.W. X 4

### 164 Wessex Sculptors

SAT 16 SUN 17 CLOSED FRI 22 SAT 23 SUN 24 MON 25 CLOSED FRI 29 SAT 30 SUN 31 **11-6**

Wessex Sculptors has 27 members actively involved in producing sculpture on a weekly basis. Many members are regular exhibitors at other events. We draw inspiration from seed pods to crocodiles via dance and dog walking, and use materials as diverse as shredded paper to motorbike parts.

**CIA The Black Barn, Brockwood, Bramdean, Alresford SO24 0LH**

Turn south off A272 between Bramdean and West Meon. The barn is 1/2 mile up on left side in the hamlet of Brockwood. **Level access but stoney car park**

### 165 Natalie Bunce / Claire Hearse

photography / mixed media **open each day: 10-6**



'natart' will be displaying artwork showing a mixture of styles from realism to semi abstract. Come and view a unique collection of original works and limited edition prints, in a variety of media and subject matter. The collection will include fine art photography, digital illustration, painting, mixed media and textiles.

**'Brambles' 2 Blackberry Lane, Four Marks, Alton GU34 5BN 07946 177 085**

info@natartphotography.co.uk www.natartphotography.co.uk

From Winchester enter Four Marks on A31; right at crossroad into Lymington Bottom; past village hall and church; turn left onto steep hill (Blackberry Lane). No. 2 is about 1 mile on left after tight bend.

**Level access but stony path**





The UK's largest range of quality art materials

**Thousands of quality art products at great prices**

**Easy to use webshop with 35,000 products online**

\*catalogue cost £3.00



To order your copy of the **NEW GreatArt 420pg Catalogue:**\* **Visit:** [www.greatart.co.uk](http://www.greatart.co.uk)  
**Write to:** Normandy House, 1 Nether St, Alton, Hants, GU34 1EA **Call:** 0845 601 5772