



M.W. X 3



## 124 Claire Mason stone carving

CLOSED SAT SUN MON 23 24 25 CLOSED SAT SUN 30 31 10.30-5

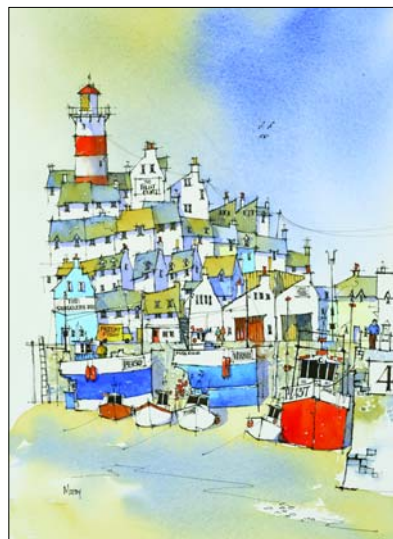
CLAIRE mainly carves stone from the Portland Purbeck hills, receiving commissions for figurative/elegant abstract sculptures, bespoke memorials and unique gifts/trophies. She runs informal stone-carving workshops, one of many courses held in the beautiful woodland surroundings of Bradgate Manor. **Bradgate Manor, Abbey Hill, Netley Abbey, Southampton SO31 5FB** 07974754872 [claire@clairemason.org.uk](mailto:claire@clairemason.org.uk) [www.clairemason.org.uk](http://www.clairemason.org.uk) [www.bradgatemanor.org](http://www.bradgatemanor.org) From Western Shore, towards Netley village, take first turn left into road marked Fountains Park just left of the Abbey ruins. Bradgate Manor is the 2nd driveway on the left. Follow signs within the grounds. **Accessible for wheelchair users**

## 125 Ron Moody watercolour/pen & wash/mixed media open each day 11-5 (except 20th and 27th)

RON has had no formal training and does not take his art too seriously. He uses bright, primary colours to create paintings in a lighthearted, quirky style. This year he is also showing his more abstract work, using acrylic inks and mixed media. **40 Grange Road, Netley Abbey, Southampton SO31 5FE** 023 80 453788 [ronaldmoody@tiscali.co.uk](mailto:ronaldmoody@tiscali.co.uk) [www.moodyarts.co.uk](http://www.moodyarts.co.uk)



M.W. X 2



From J8 on the M27 take B3397 towards Hamble – after ½ mile turn right A3025 (signed Woolston) After ½ mile, turn left into Grange Road, signed Netley Abbey. 40 is 1 mile on the left. **Suitable for disabled visitors**



## 126 Mike & Wendi Watson photography / paintings / textiles open 22nd-24th, 30th, 31st, 12-6

MIKE photographs of Hampshire villages, architecture, ponds and pondlife. WENDI textile bags; paintings with Egyptian and Indian themes. **95 Station Road, Netley Abbey, Southampton SO31 5AH** 02380 454241 [mikewatson.photography@zoom.co.uk](mailto:mikewatson.photography@zoom.co.uk) 02380 453475 [wendi.watson@virgin.net](mailto:wendi.watson@virgin.net) From M27 J8 take the B3397 signed Hamble. Follow brown tourist signs to Netley Abbey and Victoria Country Park. Before Hamble turn right into Hound Road, which finally becomes Station Road. Over small bridge, past two right turnings. 95 is a bungalow on a right hand bend. Park in drive. Or take the train – the station is 500 yds from us. **One low step**



M.W. X 3

## 127 Noël Barker oil / acrylic / mixed media 11-5

SAT SUN MON TUE WED THUR FRI SAT SUN 16 17 18 19 20 21 22 23 24 CLO 26 27 28 29 30 31

NOËL is mainly known for her naive style, but she sometimes diversifies into other styles; contemporary still life, landscapes worked with a palette knife, etc. **8 College Close, Hamble, Southampton SO31 4QU** 023 8045 3106 [moorings@btinternet.com](mailto:moorings@btinternet.com) [www.noelgallery.ndo.co.uk](http://www.noelgallery.ndo.co.uk) Leave M27 at J8, follow signs to Hamble. About 1 1/2 miles down B3397 (Hamble Lane) is the 'Harrier' pub on left. Turn 3rd left into Aquila Way, first left into College Close. No.8 is at far end. **Steps, unsuitable for wheelchairs**



## 128 Ian Finlay oil / watercolour / pencil / photography open 20th to 25th August, 10-5

Internationally commissioned, Ian's inspiring paintings of marine, landscape and equestrian subjects are accurate representations full of movement, light and colour. This first comprehensive open studio also includes paintings of The Solent and River Hamble. **22 Mercury Gardens, Hamble SO31 4NZ** 07775 742166 [www.ianfinlay.com](http://www.ianfinlay.com) [ian@ianfinlay.com](mailto:ian@ianfinlay.com) From J8 on M27 follow signs to Hamble (A3025, then the B3397). Go straight over three roundabouts, turn left at Satchell Lane. After 1 mile turn left into Mercury Gardens. Limited parking. **One step into house.**

