



82 Jacqui & Antonia Sullivan

monoprints / textiles / watercolour / pastel / ink

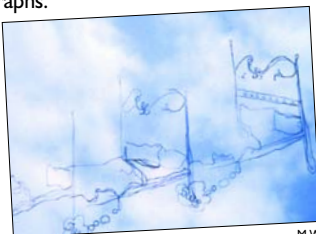
open each day 11-6

Delicate and unusual artwork. Atmospheric photographs. Hand painted original greetings cards which can be personalised. All for sale at affordable prices.

16 Garbett Road, Winnall,
Winchester SO23 0NX
01962 865601

Junction 9 on M3. Take exit to Winnall Industrial Estate, Easton Lane. Turn left at Winnall Manor Road. Turn right at Garbett Road.

Steps to property give limited access



M.W.

85 Lesley Bellchambers

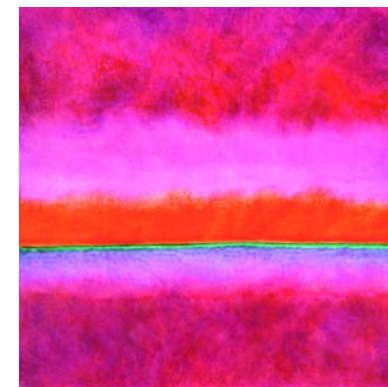
oil on canvas / gouache on paper.

CLO 19 SUN 21 TUE 23 THUR 25 SAT 28 CLOSED 30 CLO 1 2 10-5

Vibrant abstract paintings concerned with heat, light, energy and flux. Most recently inspired by study visits to India.

'Morningdale Cottage',
63 Andover Road,
Winchester SO22 6AU
01962 866347 l.bellchambers@btinternet.com

10 minutes walk from Winchester railway station, approx. 400yds from 'Jolly Farmer' pub, between Bereweke Road and Park Road. 3 steps to front door



M.W.



83 Victoria Wornum

open each day:

Mons-Fris 6-9, Sats & Suns 11-6, or by appointment

Victoria hand paints designs on italian silk, and makes wall panels and decorative cushions. Her artwork creates impact and style and has been well received due to its unique originality and grand approach, favouring organic illustration. Commissions welcome.

14 Wharf Hill, Winchester SO23 9NQ
07779 600523 info@victoriawornum.co.uk

www.victoriawornum.co.uk

Turn off into Bar End Road (south-east edge of city). No. 14 is on left, set back from road, shortly after the 'Black Boy' pub going towards Kingsgate Tennis Club and Water Meadows. Several steps up to house

84 Josephine Chisholm

open each day 11-5

Impressionistic, imaginative, colourful work in various media, covering townscapes, landscapes, seascapes, people and events at home and abroad. On sale are framed and unframed paintings, prints, greetings cards, postcards and art mugs for all budgets.

20 Arthur Road, Hyde, Winchester SO23 7EA 01962 863492
josephine.chisholm@googlemail.com

Arthur Road is off B3047 towards Kings Worthy. We are 10 minutes walk from station and town centre. Public car park: The Winchester Hotel, Worthy Lane.

One low step from pavement and another into house



86 Clare Goodman

oil / acrylic / pastel / gouache / watercolour

open 18th to 31st August 12-6

Impressionistic landscape and seascape paintings of a figurative and semi-abstract nature. A large collection of paintings with prices starting at £20. Greetings cards available.

5 West End Close, Winchester SO22 5EW
01962 865515 info@clare-goodman.com
WWW.THEVIRTUALARCADE.CO.UK

Entering Winchester from the Romsey direction on the A3090 pass the County hospital on your right and then turn left after the Police headquarters into West End Terrace. The Close is second left. Free parking outside number 5, or in righthand corner of free car park at the entrance to the Close. 4 steps to front door



Complimentary wine at private view on Friday 17th August, 6 pm onwards.

87 Gill Robinson

oil / acrylic / watercolour / pastel

CLOSED SAT 25 SUN 26 CLOSED SAT 1 SUN 2 11-6

Paintings and drawings in various media exploring landscape, seascape and music.

46 Western Road, Winchester SO22 5AH
01962 869919

gill.robinsonart@virgin.net www.gill-robinson.co.uk
Off Stockbridge Rd. (B3049) on foot: from Winchester station car park, 2nd left after roundabout.

By car: 3rd left, (Fordington Rd.), 1st left (Cheriton Rd.) 1st left (Western Rd.) 46 is halfway down on left.

Nearest car parks: at station and Tower St. 2 steps

