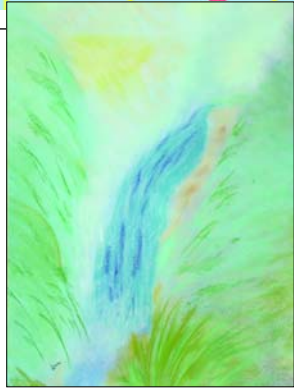


Grateley
Upper Clatford
Forton
Longparish
Andover
The Pentons
Weyhill



67 Renate West pastel / acrylic / charcoal
 SAT SUN CLO TUE WED THUR FRI SAT SUN TUES WED THUR FRI SAT CLO 11-6
 18 19 CLO 21 22 23 24 25 26 CLO 28 29 30 31 1 CLO

Fascinated by nature's colours, landscapes, shapes and forms around me, combined with total spontaneity, my images come from within me, creating a mixture of mainly abstract and some traditional paintings.
5 Lawrence Houses, Grateley, Andover SP11 8JX
 01264 889507 renatewest@virgin.net www.think.artme.uk
 From A303 take exit signed 'Andover Newbury A343 Portw. Ind. Est. Weyhill Monxton DLO Andover'. Follow signs 'DLO Andover Monxton'. Pass DLO, carry on straight through Monxton, a few miles, into Grateley, pass 'Plough Inn', take first right, past shop (High Street), first right again to Lawrence Houses. Free admission.
Free, easy parking. Restricted access for visitors in wheelchairs



70 Paula Vize acrylic on canvas / watercolor
open 18th to 26th August 10-5, (2nd week by appointment)

Paintings of hounds of course!! Fauna, flora and portraiture from the Bourne Valley and beyond. Strong contemporary paintings with a modern quirkiness, in acrylic on canvas and in watercolour.
Walnut Tree House, Longparish, Andover SP11 6QQ
 01264 720418 pvize@btinternet.com www.paulavize.co.uk
 From Andover, take B3400 to Whitchurch, ignore Longparish sign and go to Hurstbourne Priors. Turn right to Longparish and just after bend, on right.
 OR from A303 take B3048 to Longparish and continue 2 miles through village.
For disabled access, phone first please

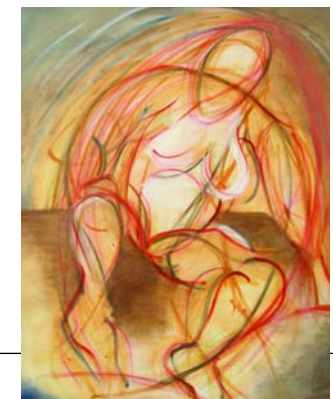


68 Gabrielle Preedy stained glass
 SAT SUN CLO WED THUR FRI SAT SUN MON CLO THUR FRI SAT SUN
 18 19 CLO 22 23 24 25 26 27 CLO 30 31 1 2 10-5

I design and make stained glass windows to commission, for private residences and churches. I mainly use handblown glass incorporating painting, silver staining and acid etching techniques.
Kingfishers, Balksbury Hill, Upper Clatford, Andover SP11 7LW
 01264 333815 gpreedy@hotmail.com
 From A303 take A343 to Salisbury. Turn left at roundabout towards Andover town centre. Take first right Balksbury Hill. Go past Era Park. 'Kingfishers' iron gates on left after fields. Parking for several cars. **Suitable for disabled visitors**

71 Keith Pattison oil / acrylic / charcoal
 SAT SUN CLO TUE WED CLO FRI SAT SUN MON TUES WED CLO FRI SAT SUN
 18 19 CLO 21 22 CLO 24 25 26 27 28 29 CLO 31 1 2 11-6

Paintings, drawings, original prints and photographs. I work mainly in oils and acrylics and prefer charcoal as my drawing medium. My subjects range from figurative to pure abstraction and more recently African wild life.
White Cottage Studio, 15 Winchester Gardens, Andover SP10 2EH tel: 01264 392411
keith.pattison@ntlworld.com www.keith-pattison.co.uk
 Winchester Gardens. is on the east side of Winchester Road (A3057) just north of the A303 (Stockbridge/Wherwell junction) and Andover Golf Club.
Regret access not suitable for visitors in wheelchairs



69 Alix Baker FRSA AFAS PCFAS
 watercolour / oil / acrylic / mixed media
 SAT SUN MON CLO THUR FRI SAT SUN MON CLO 10-5
 18 19 20 CLO 23 24 25 26 27 CLO

Landscapes, marine, architectural, people. Many subjects and styles. Originals, prints, and greeting cards in a working studio/gallery. Some military postcards, caricatures, paintings. Donating percentage to The Macular Disease Society.
The Orchards, Forton, Andover SP11 6NN
 07808 137305
art@alixbaker.com www.alixbaker.com
 From Andover, A303 east. Turn north onto B3048 signed Longparish. 200 m then follow signs. Parking.
Disabled access suitable through standard doorway

72 Ruth Facey silver & gold jewellery / semi precious stones
 SAT SUN MON CLO FRI SAT SUN MON CLO THUR FRI SAT CLO 11-6
 18 19 20 CLO 24 25 26 27 CLO 30 31 1 CLO

open throughout the year by appointment
 Fine details in gold, textural variations and innovative fastening solutions characterise my work, with colour arriving by way of unusual semi precious beads. This creates clear contemporary design in a relaxed style.
2A Bishops Way, Andover SP10 3EH 01264 353058
rfacey@waitrose.com www.ruthfacey.co.uk
 Close to centre of Andover. 400m east of Railway Station, last house on left in Bishops Way, set back from road. Studio at end of gravel drive. **Level access from gravel drive**

