



## 28 David Rogers *studio pottery*

**open each day 10-5, 12-5 Sundays**

Traditional tableware with a contemporary twist. Stoneware and durable pots thrown on the wheel, then glazed with my own textural glazes. Deep blues, emphasized throwing lines and curled handles are trademarks.

**Vinegar Hill Pottery, Mockbeggars, Vinegar Hill, Milford-on-Sea SO41 0RZ 07881 658727 or 01590 642979 www.davidrogerspottery.co.uk**

From B3058 turn right (from Lymington) after school from Manor Rd. Follow into Barnes Lane. Pass Methodist Church. 3rd on right into Vinegar Hill. Pottery at bottom on left. **Regret unsuitable for disabled visitors**



## 29 Enid Freshwater/Cathy Beggs/Jo Britton, Shona Cross/Jackie Dickson/Jenny Janes, Barbara Latham/Jill Stopher/Derek Clayton

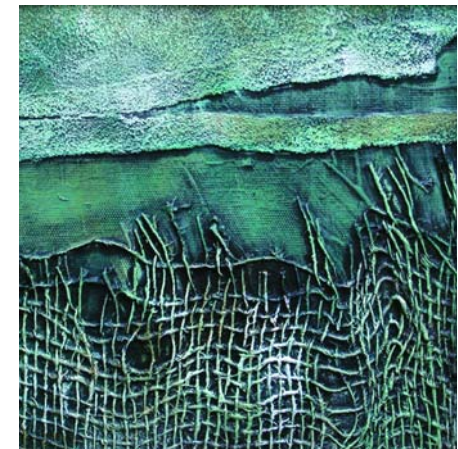
SAT SUN MON TUE WED THUR FRI SAT SUN MON TUES **CLOSED**  
18 19 20 21 22 23 24 25 26 27 28

**10-4.30 weekdays & Sats, 12-5 Suns**

We are a group of artists who meet regularly to paint and exchange ideas. We work in all media and our subjects range from local scenes to botanical studies.

**All Saints Church Hall, Greenbanks Close, Milford on Sea SO41 0SQ 01590 673189 Mob: 07852540098**

From Milford village green follow signs to Norman church. At top of Church Hill turn left. The hall is on the right. Refreshments available. **Ample parking Access suitable for disabled visitors**



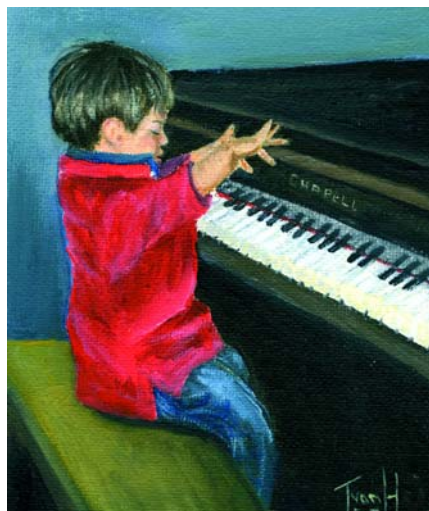
## 30 Christina Young / Tessa van Hasselt *pastel / mixed media / oils*

SAT SUN MON TUE WED THUR FRI SAT SUN MON TUES **CLOSED** **10-5**  
18 19 20 21 22 23 24 25 26 27 28

CHRISTINA paints mainly in pastels, also mixed media. people, places, sea and boats  
TESSA paints mainly in oils. Mostly children, seascapes and coastal scenes.

**Creek End, Keyhaven, Lymington SO41 0TR 01590 642489 rhyoung@ukonline**

From Milford-on-Sea take the road signposted Keyhaven. Drive through the village passing the 'Gun' pub on the right. After 200yds turn right at a T-junction. Creek End is the 3rd house on the right. **2 steps to the door, no handrail**



## 31 Melvyn Gates/Helen Talbot/Angela Bates/Alison Clegg *a wide range of media*

**open each day 10-5**

Emotions and environments are inspirational to the work we produce, resulting in representational and abstracted images, in a variety of media. Tea, coffee and homemade cake available in aid of The Children's Hospice, Naomi House.

**Rowlands, Farmers Walk, Everton, Lymington SO41 0JZ 01590 645489 www.artforce.org.uk**

**melyngates@artforce.org.uk**

Approaching from the west on A337, take first left after Everton Nurseries, then first left again into Farmers Walk. Follow signs from A337. **Easy access to outside studio, one step to inside area**

## 32 Jeanne Moles *acrylic / mixed media*

**CLO** SUN MON TUE WED THUR FRI SAT SUN MON **CLO** WED THUR FRI **CLOSED**  
19 20 21 22 23 24 25 26 27 29 30 31

**10-4**

Vibrant colours, contemporary, spontaneous. Likes to experiment with all media, sometimes with all media together on one painting.

**Greenhays, Norleywood, Lymington SO41 5RS 01590 626676**

Out of Lymington on the Beaulieu Road B3054.

Approx. 3 miles then turn right signed Norleywood. Once in village pass 2 right turnings. We are second house on left.

**Very rough ground**

